

***New Era Pump Systems, Inc.***

**SyringePump.com**

***2012 Catalog***



# Table of Contents

## Syringe & Peristaltic Pumps

• <u>NE-9000 Peristaltic Dispensing Pump</u>	3
• <u>NE-300 Just Infusion™ Single Syringe Pump</u>	4
• <u>NE-1000 Single Syringe Pump Models</u>	5
• <u>NE-4000 Double Syringe Pump Models</u>	6
• <u>Multi Syringe Pumps Models</u>	7
• <u>NE-1002X Microfluidics Single Syringe Pump Models</u>	8
• <u>OEM Syringe Pump Models &amp; Design Services</u>	9
• <u>Netbook Syringe Pump</u>	10
• <u>Continuous Infusion Pump Systems</u>	11
• <u>Continuous NE-1000X: Next Generation Continuous Infusion Syringe Pump System</u>	12

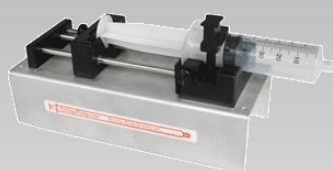
## Upgrades & Accessories

• <u>Upgrade Options</u>	13
• <u>Syringe Heater Kit</u>	14
• <u>Anabox Analog Sensor Interface &amp; Foot Switch</u>	15
• <u>Valve Control Boxes</u>	16
• <u>Pump Cables &amp; Accessories</u>	17
• <u>Syringe Pump Control Software Syringe Pump Pro</u>	18
• <u>Disposable Syringes &amp; Kits</u>	19
• <u>Glass Syringes</u>	20
• <u>Stainless Steel Syringes</u>	21

## NE-1000 Fully Programmable Family of Syringe Pumps



NE-1000



NE-500



NE-4000



NE-1600



NE-1800



NE-1002X



NE-4500



NE-4002X



NE-1200



Dual-NE-1000

**NEW ERA**  
Pump Systems Inc.  
SyringePump.com

**SyringePump.com**  
Clever Pumps, Priced Right!

New Era Pump Systems, Inc.  
138 Toledo St. • Farmingdale, NY 11735 • 631-249-1392





## NE-9000 Peristaltic Dispensing Pump \$500

*Featuring Learn & Repeat™ for  
Fantastic Productivity!*

- ✓ Pump from a reservoir through replaceable continuous tubing.
- ✓ Pump never comes into contact with fluid.
- ✓ Continuous Pumping. Up to 900 mL/min.
- ✓ Measured dispenses for production filling of bottles.
- ✓ Learn and Repeat™ for quick setup of production dispenses.
- ✓ Computer and foot switch interface.

### Description:

Have a need to accurately fill multiple bottles, vials, or other containers with a liquid? The Learn and Repeat™ mode of the NE-9000 Peristaltic Pump from New Era Pump Systems Inc. makes even the smallest of businesses highly productive right from day one. The NE-9000 is equipped to be used in many settings from the small home based businesses to the large factory floor. The pump can be integrated into existing production lines or simply used stand alone. The NE-9000 comes fully programmable and can be operated manually or with a PC through a RS-232 communication port. Even the most novice of technology users can easily operate the pump stand alone or through the PC. The pump's specialty is in small scale production dispensing. It will fill numerous bottles, vials, etc. with fluids of all types. Equipped for mass production dispensing at a price affordable for the home based business, this pump is a great deal no matter what your purchasing power is. The flow rates vary from a minimum of 0.041 mL/min to a maximum of 904.4 mL/min with 3/16" ID. tubing. Space Saving Chassis: Foot print size of only 7 3/4" x 5 1/4". Won't take up unnecessary space on your laboratory or production bench. Easy-to-use keypad interface.

### Features:

#### Dispense or withdrawal pumping

- Learn and Repeat™
- Foot Switch control available.
- Slow down mode to improve accuracy of dispenses.
- Anti-Drip mode to stop oozing after dispenses.
- Calibration mode to improve accuracy.
- Programmable dispense volumes. Store and select from up to 40 dispenses.
- Non-volatile memory of all operating parameters and pumping program.
- Programmable Phases allowing complex pumping applications and interaction with external devices.
- RS-232 bi-directional control for complete control from a PC. Network up to 100 pumps and other devices.
- Digital logic input: TTL I/O with software filtered control inputs to eliminate glitches and ringing on the control inputs.
- Configurable TTL operational trigger for foot switches and other devices.
- Power Failure Mode: Restarts the Pumping Program after a power interruption.
- Audible Alarm
- Two year warranty
- Includes all the advanced functions and programming features of the NE-1000 family.
- Worldwide power supplies available.
- Comes with 5ft of Noreprene Industrial Grade Tubing, other tubing available.

**\*\*Not For Clinical Use On Humans\*\***



# NE-300 Just Infusion™ Syringe Pump



**\$275** Breakthrough  
**PRICING!**

## Infuses Only!

- Just the features that you want and none that you don't want to pay for
- Does not withdraw, volume target, have computer interface or have programmability

### 3 Easy Steps!

1. Set the syringe diameter
2. Set the infusion rate
3. Start the pump

- Holds small or big syringes up to 60 mL
- Pumps continuously until you stop the pump
- Variable infusion rate can be changed while pumping
- Remembers previous settings on power up
- Power failure mode allows pump to continue pumping after a reset
- Syringe purge mode
- Displays total volume dispensed in mL or  $\mu$ L units
- Maximum pumping rate of 1568 mL/hr with a 60 mL syringe
- Precise reproducible flow rates
- Selectable infusion rates units: mL/hr,  $\mu$ L/hr, mL/min,  $\mu$ L/min

**\*\*Not For Clinical Use On Humans\*\***

**NEW ERA** SyringePump.com  
Pump Systems Inc. Clever Pumps, Priced Right!  
SyringePump.com

New Era Pump Systems, Inc.  
138 Toledo St. • Farmingdale, NY 11735 • 631-249-1392



## NE-1000 Single Syringe Pump - \$750

High Pressure Syringe Pump

NE-1010: \$830

Continuous Infusion  
Syringe Pump System

Dual-NE-1000: \$1510

Microfluidics Double  
Syringe Pump

NE-1002X: \$1500



### NE-1000 Features:

Accepts 1 syringe from the smallest size available up to 60 mL. A 140 mL syringe can be filled up to 120 mL. NE-1000 & Dual-NE-1000 pumping rate as low as 0.73  $\mu\text{L/hr}$  with a 1 mL syringe or as high as 35.33 mL/min with a 60 mL syringe. NE-1010 pumping rate as low as 1.459  $\mu\text{L/hr}$  with a 1 mL syringe or as high as 127.2 mL/min with a 60 mL syringe. NE-1002X pumping rate as low as .008 nL/hr with a 0.5  $\mu\text{L}$  syringe or as high as 1555  $\mu\text{L/min}$  with a 60 mL syringe.

### The NE-1000 Family of Syringe Pumps Features

- Built for Automation
- Operates stand-alone or from a computer
- Infuses and withdraws
- Applications range from simple infusions to complex pumping programs
- Programmable preset protocols
- Program up to 41 pumping phases: change pumping rates, set dispensing volumes, insert pauses, control and respond to external signals, sound the buzzer.
- RS-232 and TTL logic control interfaces

Two pumps connected with a dual cable create a Dual Pump System allowing for continuous infusion or emulsification. Network, control, and monitor up to 100 pumps with one computer. Worldwide power supplies available. Motor stall detection. Non-volatile memory of all parameters and programming. Upgradeable to the X and X2 advanced firmware versions for gradient pumping and increased program memory. Dispensing accuracy of +/-1%. Unlimited lifetime technical support. Two year warranty. Plus many, many more features!

**\*\*Not For Clinical Use On Humans\*\***

**NEW ERA**  
Pump Systems Inc.  
SyringePump.com

**SyringePump.com**  
Clever Pumps, Priced Right!

New Era Pump Systems, Inc.  
138 Toledo St. • Farmingdale, NY 11735 • 631-249-1392



## NE-4000 Double Syringe Pump - \$975

Continuous Infusion  
Double Syringe Pump System  
DUAL-NE-4000: \$1960

Microfluidics Double  
Syringe Pump  
NE-4002X: \$1950

### **BUILT FOR AUTOMATION**



### NE-4000 Features:

Accepts 2 different syringes from the smallest size available up to 60 mL. A 140 mL syringe can be filled up to 120mL. 2 different sized syringes can be used for proportional infusion. NE-4000 & Dual-NE-4000 pumping rate as low as 1.459  $\mu\text{L/hr}$  with a 1 mL syringe or as high as 127.2 mL/min with a 60 mL syringe. NE-4002X pumping rate as low as .008 nL/hr with a 0.5  $\mu\text{L}$  syringe or as high as 1555  $\mu\text{L/min}$  with a 60 mL syringe.

### The NE-1000 Family of Syringe Pumps Features

- Built for Automation
- Operates stand-alone or from a computer
- Infuses and withdraws
- Applications range from simple infusions to complex pumping programs
- Programmable preset protocols
- Program up to 41 pumping phases: change pumping rates, set dispensing volumes, insert pauses, control and respond to external signals, sound the buzzer.
- RS-232 and TTL logic control interfaces

Two pumps connected with a dual cable create a Dual Pump System allowing for continuous infusion or emulsification. Network, control, and monitor up to 100 pumps with one computer. Worldwide power supplies available. Motor stall detection. Non-volatile memory of all parameters and programming. Upgradeable to the X and X2 advanced firmware versions for gradient pumping and increased program memory. Dispensing accuracy of +/-1%. Unlimited lifetime technical support. Two year warranty. Plus many, many more features!

**\*\*Not For Clinical Use On Humans\*\***

**NEW ERA**  
Pump Systems Inc.  
SyringePump.com

**SyringePump.com**  
Clever Pumps, Priced Right!

New Era Pump Systems, Inc.  
138 Toledo St. • Farmingdale, NY 11735 • 631-249-1392



## Multi Syringe Pumps - \$1500



NE-1200: \$1500  
DUAL-NE-1200: \$3010

- Holds 2, 4, 6, 8, 10 or 12 syringes of up to 3 cc each
- Infusion rates from 0.454  $\mu\text{L/hr}$  (1 cc syringe) to 121.2 mL/hr (3 cc syringe)
- Higher flow rate models available
- Easy-to-use keypad interface



NE-1600: \$1500  
DUAL-NE-1600: \$3010

- Holds 2, 4 or 6 syringes of up to 60 cc each or 2 or 4 syringes up to 140 cc each
- Infusion rates from 0.454  $\mu\text{L/hr}$  (1 cc syringe) to 2376 mL/hr (140 cc syringe)
- Higher flow rate models available
- Easy-to-use keypad interface



NE-1800: \$1500  
DUAL-NE-1800: \$3010

- Holds 2, 4, 6 or 8 syringes of up to 10 cc each
- Infusion rates from 0.454  $\mu\text{L/hr}$  (1 cc syringe) to 342.6 mL/hr (10 cc syringe)
- Higher flow rate models available
- Easy-to-use keypad interface

## The NE-1000 Family of Syringe Pumps Features

- Built for Automation
- Operates stand-alone or from a computer
- Infuses and withdraws
- Applications range from simple infusions to complex pumping programs
- Programmable preset protocols
- Program up to 41 pumping phases: change pumping rates, set dispensing volumes, insert pauses, control and respond to external signals, sound the buzzer.
- RS-232 and TTL logic control interfaces

Two pumps connected with a dual cable create a Dual Pump System allowing for continuous infusion or emulsification. Network, control, and monitor up to 100 pumps with one computer. Worldwide power supplies available. Motor stall detection. Non-volatile memory of all parameters and programming. Upgradeable to the X and X2 advanced firmware versions for gradient pumping and increased program memory. Dispensing accuracy of +/-1%. Unlimited lifetime technical support. Two year warranty. Plus many, many more features!

**\*\*Not For Clinical Use On Humans\*\***

**NEW ERA**  
Pump Systems Inc.  
SyringePump.com

**SyringePump.com**  
**Clever Pumps, Priced Right!**

New Era Pump Systems, Inc.  
138 Toledo St. • Farmingdale, NY 11735 • 631-249-1392



**New Era Pump Systems, Inc.**

Phone: 631-249-1392  
SyringePump.com

## NE-1002X Microfluidics Syringe Pump - \$1500

Continuous Infusion Microfluidics  
Syringe Pump System  
DUAL-NE-1002X: \$3010

OEM Microfluidics Syringe Pump  
NE-502X: \$1100



### NE-1002X Features:

#### Advance Per Step: 4.252232 Nanometers

Smooth pumping at ultra low flow rates. Accepts syringes from the smallest size available up to 60 mL. A 140 mL syringe can be filled up to 120mL. Pumping rate as low as 0.008 nL/hr with a .5  $\mu$ L syringe or as high as 1246  $\mu$ L/min with a 60 mL syringe. Includes the X Upgrade Smooth Linear/Gradient increasing and decreasing pumping feature.

### The NE-1000 Family of Syringe Pumps Features

- Built for Automation
- Operates stand-alone or from a computer
- Infuses and withdraws
- Applications range from simple infusions to complex pumping programs
- Programmable preset protocols
- Program up to 41 pumping phases: change pumping rates, set dispensing volumes, insert pauses, control and respond to external signals, sound the buzzer.
- RS-232 and TTL logic control interfaces

Two pumps connected with a dual cable create a Dual Pump System allowing for continuous infusion or emulsification. Network, control, and monitor up to 100 pumps with one computer. World-wide power supplies available. Motor stall detection. Non-volatile memory of all parameters and programming. Upgradeable to the X and X2 advanced firmware versions for gradient pumping and increased program memory. Dispensing accuracy of +/-1%. Unlimited lifetime technical support. Two year warranty. Plus many, many more features!

**\*\*Not For Clinical Use On Humans\*\***

**NEW ERA**  
Pump Systems Inc.  
SyringePump.com

**SyringePump.com**  
Clever Pumps, Priced Right!

New Era Pump Systems, Inc.  
138 Toledo St. • Farmingdale, NY 11735 • 631-249-1392



# New Era Pump Systems, Inc.

Phone: 631-249-1392  
SyringePump.com

## OEM Syringe Pumps NE-500 Starting at \$495

### OEM Syringe Pump

NE-500: \$495

### OEM Syringe Pump with Stall Detection

NE-501: \$550

### High Pressure OEM Syringe Pump

NE-510: \$535

### High Pressure OEM Syringe Pump with Stall Detection

NE-511: \$535

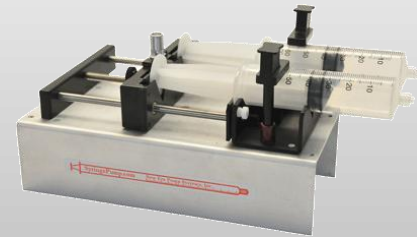
### Double OEM Syringe Pump

NE-4500: \$625

### Double OEM Syringe Pump with Stall Detection

NE-4501: \$680

- Computer controllable: networkable up to 100 pumps
- Stand-alone operation: pre-program the pump with a dispensing program, then operate the pump from an attached Foot Switch, button, or I/O controller
- Add the OEM Starter Kit to run as a fully functional, stand-alone pump.
- Designed for OEM applications, this pump has the same mechanisms and electronics as the NE-1000 aside from the front panel controls.
- Operates from a computer or a foot switch
- Infusion and withdrawal
- Set a single pumping rate and/or dispensing volume
- Program up to 41 pumping phases that change pumping rates, set dispensing volumes, insert pauses, control and respond to external signals, sound the buzzer
- Network, control, and monitor up to 100 pumps with one computer
- Motor stall detection available in NE-501 model (\$550)
- Dispensing accuracy of  $\pm 1\%$



**For Custom Designed OEM Syringe Pumps please call or e-mail for a quote.**



Custom Chassis, Firmware and Mechanical Design. You want it, we'll make it, **no matter how simple or complex**. When others say it can't be done, we say of course **it can be done**. The limits are endless to what we can create for you. We here at New Era have been designing pumps for over ten years for all types of OEM applications.

## OEM Syringe Pump Accessories

### OEM Starter & Net Kits



**Model: OEM-STARTER**  
**Price: \$25**

- Allows user to interactively communicate to the pump with a computer
- Includes: power supply, Pump-to-PC network cable and user manual



**Model: OEM-NET**  
**Price: \$10**

Power supply and secondary cable only. For use when networking two or more OEM NE-500 syringe pumps together. Must use the secondary cable in order to complete this application.

### Foot Switch



**Model: ADPT-FOOTSW-2**  
**Price: \$25**

- Start, stop, or send a signal to a pumping program
- Attach to any of the NE-1000 family pumps to allow remote operation
- Utilizes the TTL logic port on the pump
- Quick and simple setup

**\*\*Not For Clinical Use On Humans\*\***

**NEW ERA** SyringePump.com  
Pump Systems Inc.  
SyringePump.com  
**Clever Pumps, Priced Right!**

New Era Pump Systems, Inc.  
138 Toledo St. • Farmingdale, NY 11735 • 631-249-1392



**New Era Pump Systems, Inc.**

Phone: 631-249-1392  
SyringePump.com

## Netbook Syringe Pump - \$995



### Description:

User friendly netbook computer control of syringe pump. Comes with all necessary components for full stand alone usage out of the box.

### Includes:

- Basic netbook computer
- License copy of Syringe Pump Pro software
- NE-500 OEM Syringe Pump
- Small Syringe Kit
- RS-232 To USB Converter
- Pump-to-PC Network Cable
- Power Supply

### Features of the Netbook:

- Intel Atom™ Processor
- Windows 7 Starter
- 10.1" Screen

### Features of the NE-500 Syringe Pump:

- Infusion and withdrawal
- Set a single pumping rate and/or dispensing volume
- Holds 1 syringe up to 60 cc
- Infusion rates from 0.73  $\mu$ L/hr (1 cc syringe) to 2100 mL/hr (60 cc syringe)
- Dispensing accuracy of  $\pm$  1%
- Program up to 41 pumping phases that change pumping rates, set dispensing volumes, insert pauses, control and respond to external signals, sound the buzzer
- Includes all the advanced functions and programming features of the NE-1000 family
- Disposable, Glass, Stainless Steel Syringes and Plumbing Supplies are sold separately.
- Unlimited lifetime technical support
- Two year warranty

**\*\*Not For Clinical Use On Humans\*\***

**NEW ERA**  
Pump Systems Inc.  
SyringePump.com

**SyringePump.com**  
**Clever Pumps, Priced Right!**

New Era Pump Systems, Inc.  
138 Toledo St. • Farmingdale, NY 11735 • 631-249-1392



# Continuous Infusion/Dual NE-1000 Syringe Pump - \$1510



**Description:**

Two NE-1000 Family of Syringe Pumps connected together are often used in dual-pump setups, possibly with check valves for continuous pumping or mixing so that one syringe dispenses while the other reloads. Gives customer flexibility to separate pumps for individual use.

- Dual NE-1010: \$1670
- Dual NE-4000: \$1960
- Dual NE-1600/1800: \$3010
- Dual NE-1002X: \$3010

Includes all of the features of the NE-1000 family of pumps

## Dual Pump Plumbing Kit



**Description:**

- For use with our continuous infusion system or dual infusion system
- Provides a dual check valve for two syringes, withdraw will pull fluid from a reservoir and infusion will output into a separate line
- The kit is pre-assembled, all you need to do is plug in the syringes
- Each dual check valve uses 6" of 1/8" tubing to connect to a Y connector, one for reservoir and one for output; each Y-connector has 5' of tubing to make connections to your application.
- Two 60 cc Terumo syringes are included.
- Individual parts are also available.

**Model: P-DKIT**  
**Price: \$20/USA**

**\*\*Not For Clinical Use On Humans\*\***



# New Era Pump Systems, Inc.

Phone: 631-249-1392  
SyringePump.com

## Continuous NE-1000X- \$1720

(Model: Dual-NE-1000X)

*The Next Generation*

### Continuous Infusion Syringe Pump System

#### Eliminates Flow Rate Pauses & Drop-Offs!

Eliminates the problem of flow rate drop-off found in "Push-Pull" syringe pumps. In these "Push-Pull" systems, one pump is refilling while the other infuses and then they switch directions. That switch of directions causes a pause or drop in flow. The Continuous NE-1000X's continuous pumping mode eliminates the flow rate drop offs and pauses.



#### How it Works:

- Refilling pump refills the syringe at a faster rate than the infusing pump, giving it time to prime the syringe.
- Refilling pump pauses and waits for the infusing pump to empty.
- When the pumps switch directions, the refilled pump is primed and starts infusing at the set rate immediately.

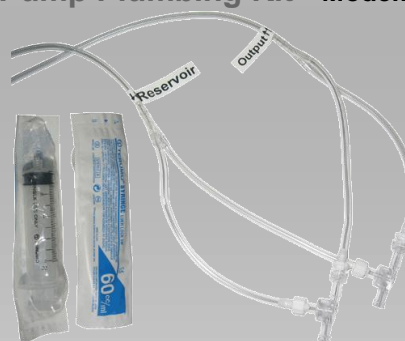
#### Features:

- Two NE-1000X Family of Syringe Pumps connected together via a Dual Pump Sync Cable.
- Continuous Pumping Mode provides a precise continuous flow without any drop-offs of pauses.
- Programmable infusion, refill and prime rates and syringe overlap and prime volumes.
- Flexibility for the pumps to perform either continuous flow, emulsification, or independently at any time.

#### NE-1000X Family of Syringe Pumps Features

- Built for Automation
- Operates stand-alone or from a computer
- Infuses and withdraws
- Applications range from simple infusions to complex pumping programs
- Programmable preset protocols
- Program up to 41 pumping phases that change pumping rates, set dispensing volumes, insert pauses, control and respond to external signals, sound the buzzer
- RS-232 and TTL logic control interfaces
- Network, control, and monitor up to 100 pumps with one computer
- Gradient ramping of flow rates
- Worldwide power supplies available
- Motor stall detection
- Non-volatile memory of all parameters and programming
- Upgradeable to 340 pumping phases program memory with the X2 Upgrade
- Dispensing accuracy of +/-1%
- Unlimited lifetime technical support
- Two year warranty
- Plus many, many more features!

#### Dual Pump Plumbing Kit - Model: P-DKIT



- For use with our continuous infusion system or dual infusion system.
- Provides a dual check valve for two syringes, withdraw will pull fluid from a reservoir and infusion will output into a separate line.
- The kit is pre-assembled, all you need to do is plug in the syringes.
- Each dual check valve uses 6" of 1/8" tubing to connect to a Y connector, one for reservoir and one for output; each Y-connector has 5' of tubing to make connections to your application.
- Two 60cc Terumo syringes are included.
- Individual parts are also available.

**\*\*Not For Clinical Use On Humans\*\***

**NEW ERA** SyringePump.com  
Pump Systems Inc. Clever Pumps, Priced Right!  
SyringePump.com

New Era Pump Systems, Inc.  
138 Toledo St. • Farmingdale, NY 11735 • 631-249-1392



## Upgrade Options

### Higher Pressure, Speed & Power Upgrade Options

Contact us, for information on higher pressure, speed or power models available.

## FirmWare (X & X2) Upgrade Options

(Available in all NE-1000 Family of Syringe Pumps)

**MODEL: FW-1-X Price: \$105**

(For all syringe pumps except the NE-300 & NE-500 Series)

**MODEL: FW-5-X Price: \$55**

(for NE-500 series models only)

## X Upgrade (Linear Gradient Pumping)

### Description:

- Smooth linear increasing or decreasing gradient
- Set the starting rate, ending rate and the time
- Pre-program multiple gradients plus any other NE-1000 programming feature
- **Continuous NE-1000X: Next Generation Continuous Infusion Syringe Pump System.** When X Upgrade is in both pumps in a dual system, Continuous Pumping Mode is able to provide a precise continuous flow without any drop-offs or pauses.

### Constant Flow Rate Gradient Pumping Upgrade:

- Maintains constant total flow rate using two pumps
- 2 X upgrades put in a two pump system, one upgrade for each pump
- Set Pump 1 to linearly increase pumping rate
- Set Pump 2 to linearly decrease pumping rate
- Sum of Pump 1 and Pump 2's flow rates remain a constant
- Can be used with any Dual System

## X2 Upgrade

(Gradient Pumping with increased program memory)

### Description:

- Contains all of the features of the X Upgrade
- Increases the number of possible programmable phases from 41 to 340
- Smooth linear increasing or decreasing gradient
- Set the starting rate, ending rate, and the time
- Pre-program multiple gradients plus any other NE-1000 programming feature
- Can easily upgrade already purchased pumps yourself
- All pumps except for the NE-300 can be upgraded

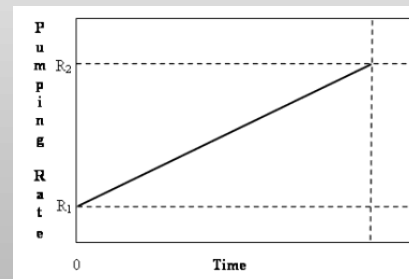
**MODEL: FW-1-X2 Price: \$205**

(For all syringe pumps except the NE-300 & NE-500 Series)

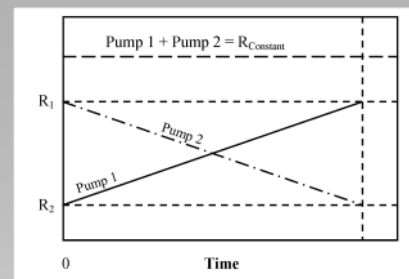
**MODEL: FW-5-X2 Price: \$110**

(for NE-500 series models only)

### Linear Gradient



### Constant Flow Rate



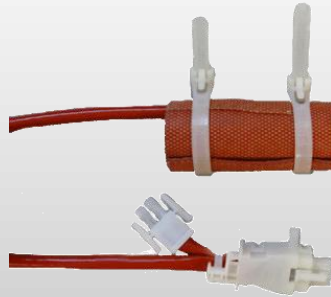
**\*\*Not For Clinical Use On Humans\*\***



## Syringe Heater Kit - \$399



**Model: HEATER-KIT-1LG**  
**Price: \$399**



**Model: HEATER-PAD2-1LG**  
**Price: \$100**

### Description for HEATER-KIT-1LG:

Heating device for syringes that requires temperature-controlled dispensing. Heats up to 185°C.

### Compatibility Notes:

- Please contact us at 631-249-1392 or [info@syringepump.com](mailto:info@syringepump.com) about pump compatibility when heating syringes above 100°C. Customization may be required.
- If you are in a country where the voltage is above 120V, you must purchase a step-down transformer with the Heater Kit.
- Digitally set the heater set point
- Temperature sensor in heating pad
- Set point and other parameters retained in memory
- Controller will heat the syringe and hold the set temperature using an on/off or Thermo-kinetic control algorithm.
- Multiple syringe heater pads can be attached to the control unit, under restricted conditions.
- Heated syringe can be mounted on a syringe pump. Please call 631-249-1392 for compatibility.
- Dual temperature sensors in primary heating pad.
- Heater Kit includes Control-Unit power cable and Primary-Syringe-Heater-Pad.

### Description for HEATER-PAD2-1LG:

For attaching a second heating pad to HEATER-KIT-1LG. Temperature is sensed in primary heating pad only.

### Compatibility Notes:

- Heater pad measures 75 mm x 75 mm
- Each syringe heater control unit uses only the primary heating pad to sense temperature. All secondary heater pads connected to that control unit function according to temperature at the primary heater pad. Careful consideration should be taken when using secondary/slave heater pads. For different temperatures or variable environments, use separate control units with primary heater pads.
- Plugging more than 12 Syringe-Heater-Pads onto one Controller is not recommended



**Model: HEATER-PAD3-1LG**  
**Price: \$100**



### Description for HEATER-PAD3-1LG:

- For attaching additional, up to 12 total, heating pads to HEATER-KIT-1LG with HEATER-PAD2-1LG
- Temperature sensed in primary heating pad only

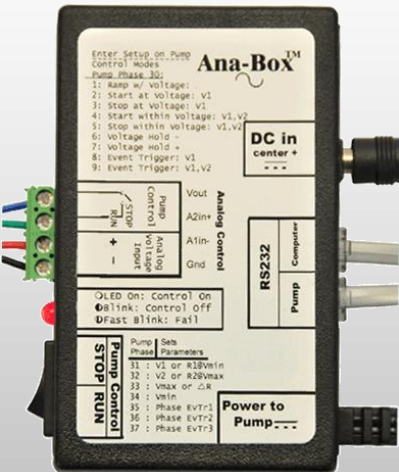
**\*\*Not For Clinical Use On Humans\*\***



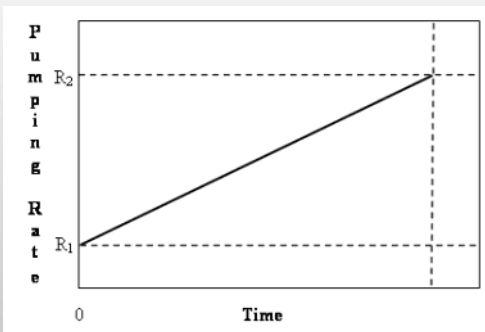
# New Era Pump Systems, Inc.

Phone: 631-249-1392  
SyringePump.com

## Featured Accessory: Anabox Analog Sensor Interface



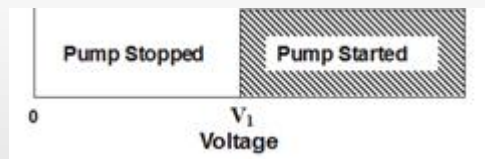
### Sample Anabox Operational Modes: Ramping (gradient) with Voltage



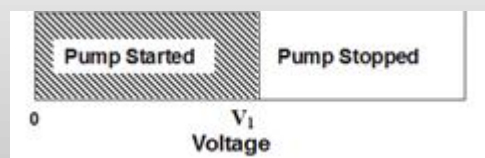
### Pressure Controlled Infusion

Automatically varies the pumping rate to maintain a pressure by utilizing your pressure sensor with a voltage output.

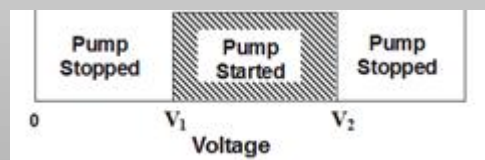
### Start Pump at Voltage Trigger



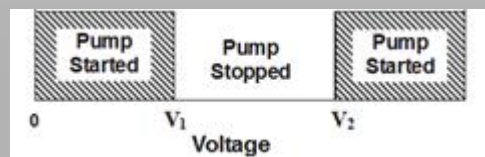
### Stop Pump at Voltage Trigger



### Start Pump within Voltage



### Stop Pump within Voltage



Model: ADPT-ANABOX-11

Price: \$99

### ANABOX CLOSED LOOP ANALOG SENSOR INTERFACE

- Vary the pumping rate in proportion to a variable voltage input
- Start or stop pump at set voltages
- Vary the pumping rate to maintain a voltage window (i.e. maintain a pressure or pH level)
- Attaches to any pump in the NE-1000 Family
- Operates stand alone. Does not need a computer to operate.
- Optionally outputs event data to a computer for data logging

## Foot Switch

### Description:

- Start, stop, or send a signal to a pumping program.
- Compatible with any New Era pump excluding the NE-300 Just Infusion
- Utilizes the TTL logic port on the pump
- Quick and simple setup
- 20 ft. length cable

Model: ADPT-FOOTSW-2

Price: US \$25



**\*\*Not For Clinical Use On Humans\*\***

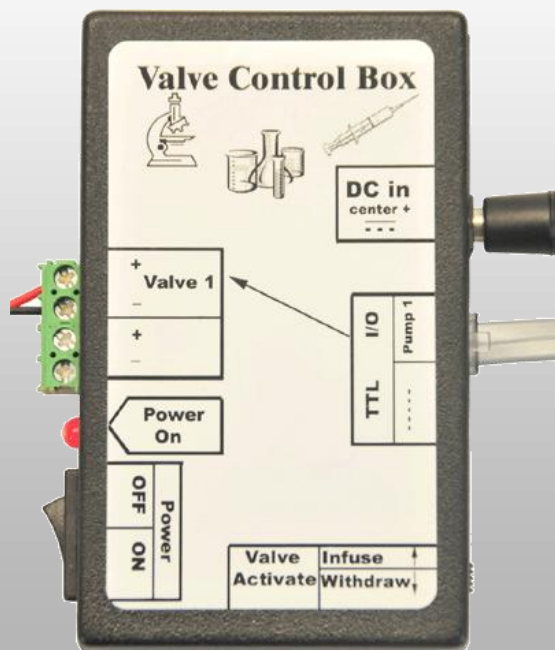
**NEW ERA**  
Pump Systems Inc.  
SyringePump.com

**SyringePump.com**  
Clever Pumps, Priced Right!

New Era Pump Systems, Inc.  
138 Toledo St. • Farmingdale, NY 11735 • 631-249-1392



## Valve Control Boxes



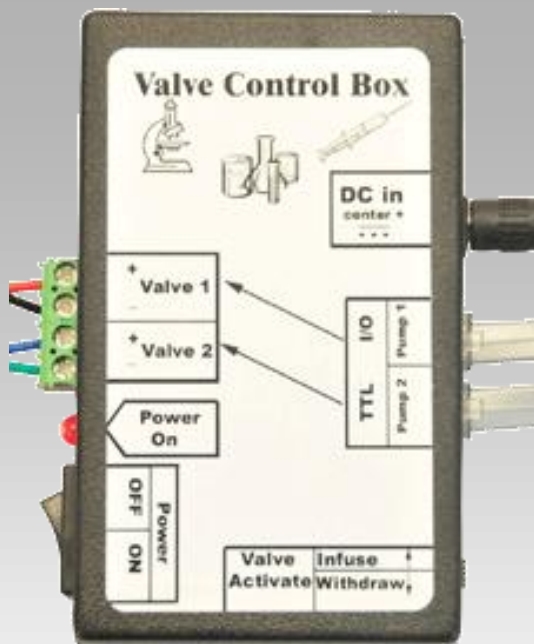
### Single Valve Control Box

#### Description:

- Attach your 12V DC valve and the control box will open or close your valve according to the pumping direction
- Utilizes the TTL logic port on syringe pump
- Includes power supply for valve

**Model: ADPT-VALVE-INTERFACE-1**

**Price: US \$85**



### Dual Valve Control Box

#### Description:

- Attach your two 12V DC valves and the control box will open or close your valves according to the pumping directions of your two pumps
- Includes CBL-TTL-1 cable to allow synchronized pumping between two pumps
- Utilizes the TTL logic ports on both syringe pumps
- Includes power supply for valves

**Model: ADPT-VALVE-INTERFACE-2**

**Price: US \$100**

**\*\*Not For Clinical Use On Humans\*\***



## Pump Cables & Accessories

### Pump-to-PC Primary Network Cable



Model: CBL-PC-PUMP-25  
Price: \$17 (25 ft. cable)

Model: CBL-PC-PUMP-7  
Price: \$15 (7ft. cable)

#### Description:

- Allows full control over syringe pumps through your computer
- DB-9 adapter connects to 9-pin serial port (25-pin adapters available upon request)
- Utilizes the RS-232 communications port of syringe pump
- Available in 7' and 25' length cable
- Quick and simple setup

### Pump-to-Pump Secondary Network Cable



Model: CBL-NET-25  
Price: \$4 (25 ft. cable)

Model: CBL-NET-7  
Price: \$2 (7ft. cable)

#### Description:

- Allows networking of two or more syringe pumps to a single computer
- Quick and simple setup
- Utilizes the RS-232 communications port of syringe pump
- Available in 7' and 25' length cable
- Requires first pump to be connected with primary network cable

### RS-232 to USB Converter



#### Description:

- Adapter to add a DB-9 RS-232 serial port to your computer by using an USB port
- Includes software driver CD

Model: CBL-USB232  
Price: US \$10

### Lockout Disable Key



#### Description:

- For use with the syringe pump's Lockout Mode
- Prevent unauthorized or accidental changes to the settings by locking the keypad
- Unlocks the keypad and allows settings to be changed
- Utilizes the TTL logic port on syringe pump
- Quick and easy setup

Model: ADPT-LOCKOUT  
Price: US \$10

### Pump Synchronization Cable



Model: CBL-DUAL-3  
Price: US \$20

#### Description:

- Used for creating a continuous or dual infusion system
- Establishes a communications link between two pumps to duplicate the exact or inverse commands issued to one pump.
- Utilizes the RS-232 logic port on syringe pump
- Quick and simple setup
- This is the new replacement cable for CBL-TTL-1 unless the use of the TTL ports for synchronization is preferred

**\*\*Not For Clinical Use On Humans\*\***

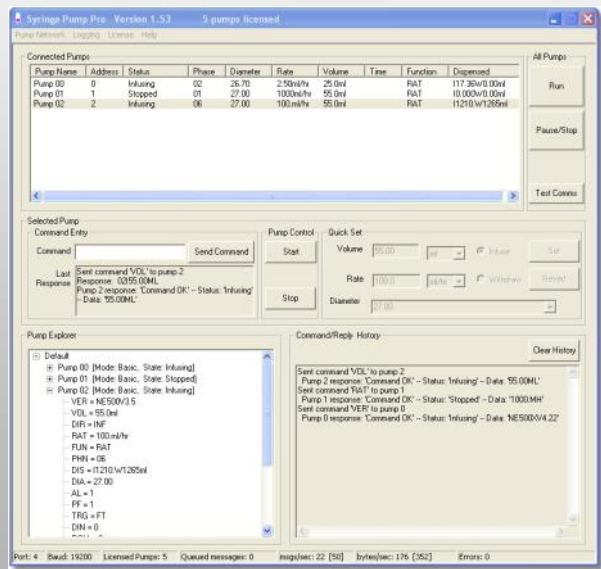


# New Era Pump Systems, Inc.

Phone: 631-249-1392  
SyringePump.com

## Syringe Pump Pro

### Syringe Pump Control Software



SyringePumpPro is an easy to use computer interface for programmable syringe pumps. It permits much faster programming and operation of one or more pumps. You can create pump programs and upload them to your pumps.

SyringePumpPro makes it easier and faster to change pump settings by directly entering settings using the user interface instead of working your way through the pumps internal menu system.

- Compatible with Netbook Syringe Pump & other Netbook screen sizes
- New epub manual format for ebook readers
- End front panel button mashing
- Configure and control multi-pump protocols
- Eliminates hours of manual pump operation
- OEM Pump? No Keypad? Use of pumps that do not have keypads
- Upload pump programs
- Send commands to one or many pumps
- No more re-typing of commands in terminal software
- Quick and easy to use interface for communicating with your pumps
- 30 Day Free Trial available at [www.syringepumppro.com](http://www.syringepumppro.com)

Compatible with Syringe Pumps from the following brands



**\*\*Not For Clinical Use On Humans\*\***



**SyringePump.com**  
**Clever Pumps, Priced Right!**

New Era Pump Systems, Inc.  
138 Toledo St. • Farmingdale, NY 11735 • 631-249-1392





## Disposable Syringes & Kits

New Era supplies an assortment of disposable plastic syringes between 1mL to 140mL from Monoject, NormJect, Terumo & Excel. You can receive discounts in box quantities.

**Note: Inert syringes are non-reactive syringes made from polypropylene and polyethylene. Inert syringes do not contain any latex, rubber, silicone oil, styrene or DEHP.**

Description (mL=CC)	Part #	Price Each	Box Part #	Box Price
140 mL Luer Lock Non-Inert	SYR-MJ140LL	\$4.95	SYR-MJ140LLBX	\$85.00 (20 per Box)
60 mL Luer Lock Non-Inert	SYR-TER60LL	\$1.25	SYR-TER60LLBX	\$18.75 (25 per Box)
50 mL Luer Lock Inert	SYR-NJ50LL	\$1.75	SYR-NJ50LLBX	\$37.50 (30 per Box)
30 mL Luer Lock Inert	SYR-NJ30LL	\$1.25	SYR-NJ30LLBX	\$40.00 (50 per Box)
20 mL Luer Lock Inert	SYR-NJ20LL	\$0.75	SYR-NJ20LLBX	\$55.00 (100 per Box)
10 mL Luer Lock Inert	SYR-NJ10LL	\$0.50	SYR-NJ10LLBX	\$40.00 (100 per Box)
5 mL Luer Lock Inert	SYR-NJ5LL	\$0.40	SYR-NJ5LLBX	\$30.00 (100 per Box)
3 mL Luer Lock Inert	SYR-NJ3LL	\$0.35	SYR-NJ3LLBX	\$25.00 (100 per Box)
1 mL Luer-Lock Non-Inert	SYR-EX1LL	\$0.40	SYR-EX1LLBX	\$30.00 (100 per Box)
1 mL Tuberculin Inert	SYR-TB1	\$0.25	SYR-EX1LLBX	\$20.00 (100 per Box)



### Large Syringe Kit Model: P-SYRKIT-LG

- (2) 20mL Luer Lock Inert
- (2) 30mL Luer Lock Inert
- (2) 60mL Terumo Luer Lock Non-Inert
- (6) Female Luer Barbs
- (3) Male Luer Barbs
- (20 ft) Tubing .125" ID, .188" OD, PVC



### Small Syringe Kit Model: P-SYRKIT-SM

- (2) 1mL Luer Lock Inert
- (2) 3mL Luer Lock Inert
- (2) 5mL Luer Lock Inert
- (2) 10mL Luer Lock Inert
- (6) Female Luer Barbs
- (3) Male Luer Barbs
- (20 ft) Tubing .125" ID, .188" OD, PVC



### Dual Pump Plumbing Kit Model: P-DKIT

- For use with our continuous infusion system or dual infusion system (Dual-NE-1000). Provides a dual check valve for two syringes, withdraw will pull fluid from a reservoir and infusion will output into a separate line.
- The kit is pre-assembled, all you need to do is plug in the syringes.
- Each dual check valve uses 6" of 1/8" tubing to connect to a Y connector, one for reservoir and one for output; each Y-connector has 5' of tubing to make connections to your application.
- Two 60cc Terumo syringes are included.

**\*\*Not For Clinical Use On Humans\*\***

**NEW ERA**  
Pump Systems Inc.  
SyringePump.com

**SyringePump.com**  
**Clever Pumps, Priced Right!**

New Era Pump Systems, Inc.  
138 Toledo St. • Farmingdale, NY 11735 • 631-249-1392



## Glass Syringes: Standard & Gas Tight

New Era supplies a full range of glass syringes from 50 $\mu$ L to 100mL in gas tight quality and 1mL to 100mL in standard quality. Standard glass can handle between 22 to 43psi while the gas tight can handle from 100psi to upwards of 400psi depending on the syringe.

### Standard Glass Syringes

Part #	Size	PSI/KPA Limits	Temp Limits	Price Each
SYR-GL1LL	1mL	43.5 / 300	200°C	\$30.00
SYR-GL2LL	2mL	43.5 / 300	200°C	\$20.00
SYR-GL3LL	3mL	43.5 / 300	200°C	\$20.00
SYR-GL5LL	5mL	43.5 / 300	200°C	\$20.00
SYR-GL10LL	10mL	29 / 200	200°C	\$28.00
SYR-GL20LL	20mL	29 / 200	200°C	\$30.00
SYR-GL30LL	30mL	29 / 200	200°C	\$54.00
SYR-GL50LL	50mL	21.8 / 150	200°C	\$75.00
SYR-GL100LL	100mL	21.8 / 150	200°C	\$275.00



- Tips are Metal Luer Lock
- Barrel and plunger are made from Borosilicate Glass and are interchangeable
- Manufactured in Germany
- Chemically compatible for a wide range of applications
- Good basic reusable syringe

### SGE Gas Tight Glass Syringes

Part #	Size	PSI/KPA Limits	Temp Limits	Price Each
SYR-GL50MCLL-S	50 $\mu$ L	400 / 2758	70°C	\$76.00
SYR-GL100MCLL-S	100 $\mu$ L	400 / 2758	70°C	\$59.00
SYR-GL250MCLL-S	250 $\mu$ L	400 / 2758	70°C	\$57.00
SYR-GL500MCLL-S	500 $\mu$ L	400 / 2758	70°C	\$54.50
SYR-GL1LL-S	1mL	400 / 2758	70°C	\$56.50
SYR-GL2.5LL-S	2.5mL	400 / 2758	70°C	\$54.00
SYR-GL5LL-S	5mL	400 / 2758	70°C	\$51.90
SYR-GL10LL-S	10mL	200 / 1379	70°C	\$71.50
SYR-GL25LL-S	25mL	100 / 689	70°C	\$162.50
SYR-GL50LL-S	50mL	100 / 689	120°C	\$205.00
SYR-GL100LL-S	100mL	100 / 689	120°C	\$303.00



- Longest working life in the industry
- All SGE syringes come with metal Fixed Luer Lock Tips except for the 50 & 100 mL which are removable.
- Suitable for chromatography applications
- Barrel made from Borosilicate Glass
- PTFE tipped plunger
- Able to replace the plunger
- Nickel plated brass barrel flange
- Manufactured in Australia
- Chemically compatible for a wide range of applications.

**\*\*Not For Clinical Use On Humans\*\***



# New Era Pump Systems, Inc.

Phone: 631-249-1392  
SyringePump.com



## Stainless Steel Syringes

New Era supplies a full range of stainless steel syringes from 1mL to 200mL. The syringes can handle 750psi (1500psi for the 8mL), high temperatures and highly corrosive chemicals. Highly corrosive chemicals may require an upgrade in O'Ring.

Part #	Size	PSI	Included Fitting	Price each
SYR-SS1	1 mL	750	None, 1/4-28 Thread	\$325.00
SYR-SS1SL8	1 mL	750	1/8 SwageLok	\$385.00
SYR-SS1SL16	1 mL	750	1/16 SwageLok	\$385.00
SYR-SS1LL	1 mL	750	Luer-Lok	\$385.00
SYR-SS3	3mL	750	None, 1/4-28 Thread	\$365.00
SYR-SS3SL8	3mL	750	1/8 SwageLok	\$425.00
SYR-SS3SL16	3mL	750	1/16 SwageLok	\$425.00
SYR-SS3LL	3mL	750	Luer-Lok	\$425.00
SYR-SS5	5 mL	750	None, 1/4-28 Thread	\$400.00
SYR-SS5SL8	5 mL	750	1/8 SwageLok	\$475.00
SYR-SS5SL16	5 mL	750	1/16 SwageLok	\$475.00
SYR-SS5LL	5 mL	750	Luer-Lok	\$475.00
SYR-SS8	8mL	1500	None, 1/4-28 Thread	\$400.00
SYR-SS8SL8	8mL	1500	1/8 SwageLok	\$475.00
SYR-SS8SL16	8mL	1500	1/16 SwageLok	\$475.00
SYR-SS8LL	8mL	1500	Luer-Lok	\$475.00
SYR-SS20	20mL	750	None, 3/8-24 Thread	\$510.00
SYR-SS20SL4	20mL	750	1/4 SwageLok	\$575.00
SYR-SS20SL8	20mL	750	1/8 SwageLok	\$575.00
SYR-SS20SL16	20mL	750	1/16 SwageLok	\$575.00
SYR-SS20LL	20mL	750	Luer-Lok	\$575.00
SYR-SS50	50mL	750	None, 3/8-24 Thread	\$595.00
SYR-SS50SL4	50mL	750	1/4 SwageLok	\$650.00
SYR-SS50SL8	50mL	750	1/8 SwageLok	\$650.00
SYR-SS50SL16	50mL	750	1/16 SwageLok	\$650.00
SYR-SS50LL	50mL	750	Luer-Lok	\$650.00
SYR-SS100	100mL	750	None, 3/8-24 Thread	\$685.00
SYR-SS100SL4	100mL	750	1/4 SwageLok	\$750.00
SYR-SS100SL8	100mL	750	1/8 SwageLok	\$750.00
SYR-SS100SL16	100mL	750	1/16 SwageLok	\$750.00
SYR-SS100LL	100mL	750	Luer-Lok	\$750.00

Part #	Size	PSI	Included Fitting	Price each
SYR-SS200	200mL	750	None, 3/8-24 Thread	\$750.00
SYR-SS200SL4	200mL	750	1/4 SwageLok	\$825.00
SYR-SS200SL8	200mL	750	1/8 SwageLok	\$825.00
SYR-SS200SL16	200mL	750	1/16 SwageLok	\$825.00
SYR-SS200LL	200mL	750	Luer-Lok	\$825.00

## Stainless Steel Syringe O-Rings

Stainless steel syringes come standard with a Viton O-Ring. Chemraz® O-Rings are ordered separately and are for applications requiring higher chemical resistance.



Part #	Description	Price each
SYRP-SSORV5	Viton, 5mL Replacement O'Rings	\$25.00
SYRP-SSORK5	Chemraz® 5mL O'Rings	\$250.00
SYRP-SSORV8	Viton 1, 3 & 8mL Replacement O'Rings	\$25.00
SYRP-SSORK8	Chemraz® 1, 3 & 8mL O'Rings	\$250.00
SYRP-SSORV20	Viton, 20mL Replacement O'Rings	\$25.00
SYRP-SSORK20	Chemraz® 20mL O'Rings	\$270.00
SYRP-SSORV50	Viton 50mL Replacement O'Rings	\$25.00
SYRP-SSORK50	Chemraz® 50mL O'Rings	\$420.00
SYRP-SSORV100	Viton 100mL Replacement O'Rings	\$25.00
SYRP-SSORK100	Chemraz® 100mL O'Rings	\$420.00
SYRP-SSORV200	Viton 200mL Replacement O'Rings	\$25.00
SYRP-SSORK200	Chemraz® 200mL O'Rings	\$460.00

## Stainless Steel Syringe Fittings



You can buy stainless steel syringes with or without fittings. They are also available to be purchased separately if needed. All fittings are pressure rated for all syringes they connect to.

## Need to heat your syringe?

The Syringe Heater Kit, you can find in the accessory section will heat all sizes of syringes up to 220°C.

**\*\*Not For Clinical Use On Humans\*\***

**NEW ERA** SyringePump.com  
Pump Systems Inc.  
SyringePump.com  
**Clever Pumps, Priced Right!**

New Era Pump Systems, Inc.  
138 Toledo St. • Farmingdale, NY 11735 • 631-249-1392



New Era Pump Systems Inc.

Phone: 631-249-1392  
SyringePump.com



## New Era Pump Systems, Inc.

138 Toledo St  
Farmingdale, NY 11735-6625

Phone: 631-249-1392  
Fax: 707-248-2089  
Email: [info@syringepump.com](mailto:info@syringepump.com)  
[www.syringepump.com](http://www.syringepump.com)

**\*\*Not For Clinical Use On Humans\*\***

**NEW ERA**  
Pump Systems Inc.  
SyringePump.com

**SyringePump.com**  
**Clever Pumps, Priced Right!**

New Era Pump Systems, Inc.  
138 Toledo St. • Farmingdale, NY 11735 • 631-249-1392

